

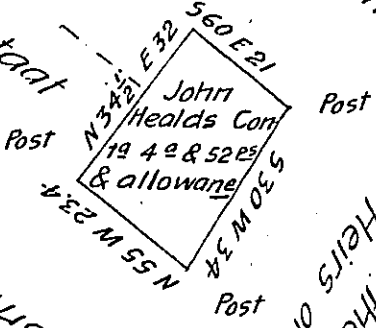
Other part of the whole tract

Samuel Grove
Peter Hoffstaad

B-14-77

Part of the original Tract
Lewisberry

Geo. Ernstmeijer



Part of the original Tract
Heirs of Eli Lewis

67-583

Situate in Newberry Township in the County of York, Contain-
 ing as above set forth 4 acres & 52 perches and allowance, being
 part of a larger tract of 400 acres of land originally Surveyed
 on the 4th day of November 1735 by Zachariah Butcher late D.S.
 In pursuance of a Warrant Granted to John Healds dated the
 first day of November 1735. Resurveyed and divided off from
 the said larger Tract of Land the 11th day of August 1809 for
 Peter Hoffstaad the present owner. Per

To Andrew Porter Esq^r

Jacob Spangler D.S.

Surveyor General.

Lancaster Pa

IN TESTIMONY that the above is a copy of the original remaining on file in
 the Department of Internal Affairs of Pennsylvania, made
 conformably to an Act of Assembly approved the 16th day of
 February, 1833, I have hereunto set my Hand and caused
 the Seal of said Department to be affixed at Harrisburg,
 this fourteenth day of March 1905.

Joseph P. Bremer
 Secretary of Internal Affairs.